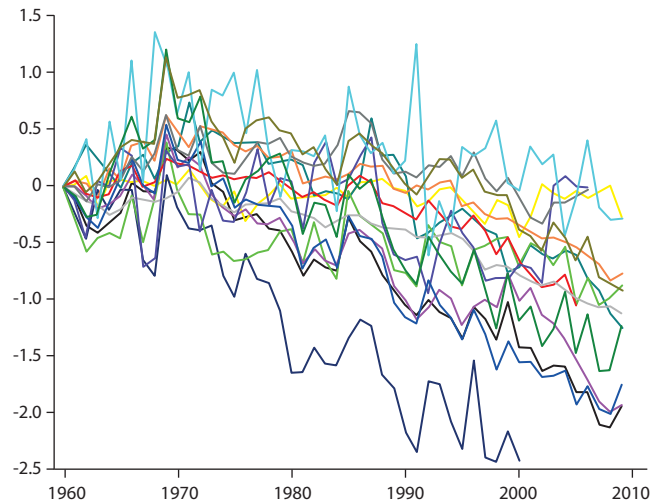
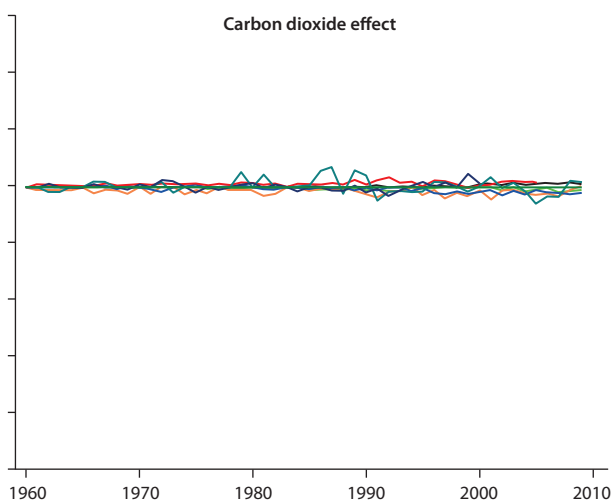


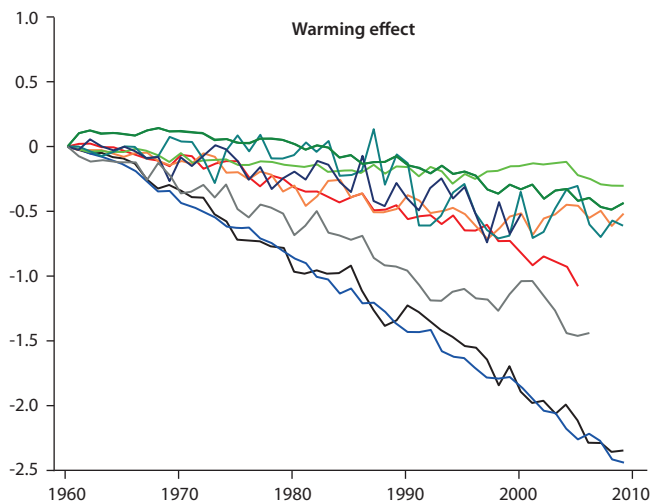
Change in permafrost area, million km²



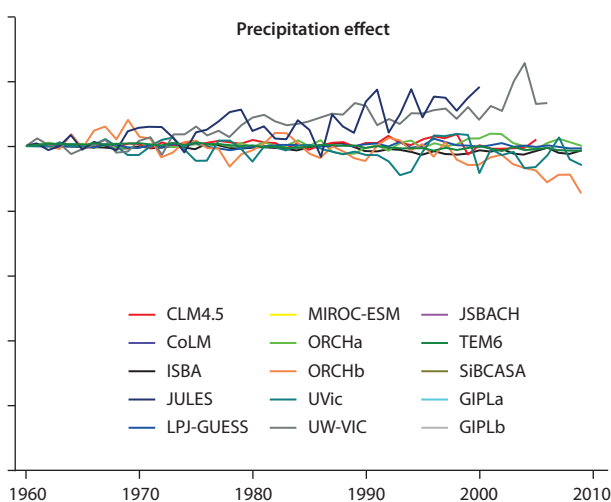
Carbon dioxide effect



Warming effect



Precipitation effect



— CLM4.5 — MIROC-ESM — JSBACH
— CoLM — ORCHa — TEM6
— ISBA — ORCHb — SIbCASA
— JULES — UVic — GIPLa
— LPJ-GUESS — UW-VIC — GIPLb