

Database screening

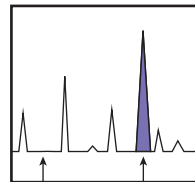
Targeted environmental screening

150000+
Chemicals in
commerce



Chemical properties
(PBT, LRT potential)

~1200
Chemicals
with potential
to reach and
accumulate in
the Arctic

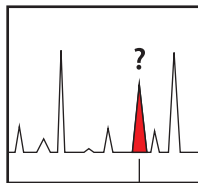


Bis (4-chlorophenyl) sulfone ✓

1,2,3,4-Tetrachlorohexafluorobutane ✗

Suspects

Unknowns



Non-targeted environmental screening



Mass spectrometry spectra
matching, interpretation

?
Chemicals
detected in
the Arctic that
warrant further
action