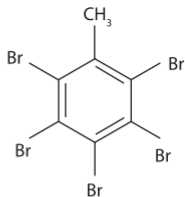
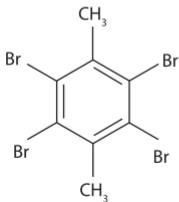


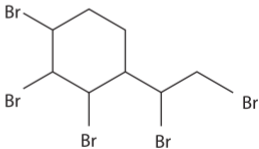
Pentabromoethylbenzene (PBEb)
(CAS no. 85-22-3)



Pentabromotoluene (PBT)
(CAS no. 87-83-2)



2,3,5,6-tetrabromo-*p*-xylene (TBX)
(CAS no. 23488-38-2)



1,2-dibromo-4-(1,2-dibromoethyl)
cyclohexane (DBE-DBCH)
(CAS no. 3322-93-8)