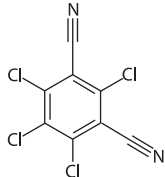
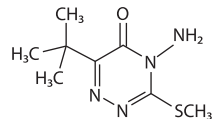


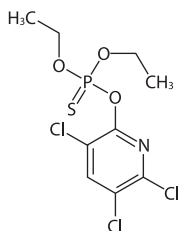
Chlorothalonil
CAS no: 1897-45-6



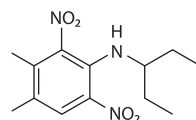
Metribuzin
CAS no: 21087-64-9



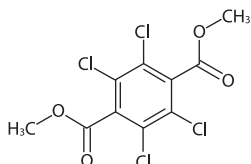
Chlorpyrifos
CAS no: 2921-88-2



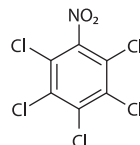
Pendimethalin
CAS no: 40487-42-1



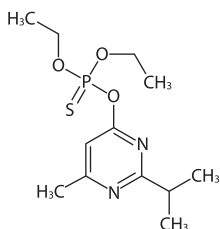
Dacthal
CAS no: 1861-32-1



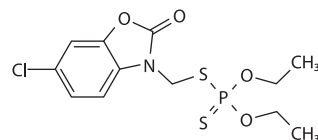
Pentachloro-
nitrobenzene (PCNB)
CAS no: 82-68-8



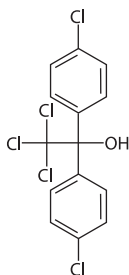
Diazinon
CAS no: 333-41-5



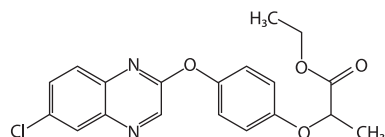
Phosalone
CAS no: 2310-17-0



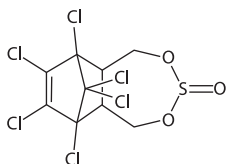
Dicofol
CAS no: 115-32-2



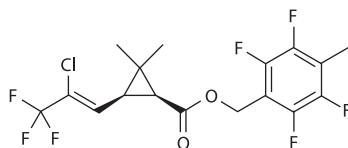
Quizalofop ethyl
CAS no: 76578-14-8



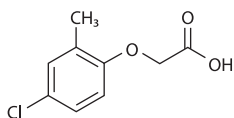
Endosulfan
CAS no: 115-29-7



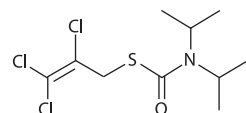
Tefluthrin
CAS no: 79538-32-2



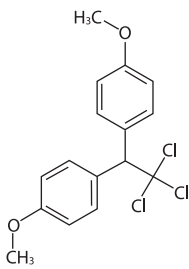
MCPA
CAS no: 94-74-6



Triallate
CAS no: 2303-17-5



Methoxychlor
CAS no: 72-43-5



Trifluralin
CAS no: 1582-09-8

