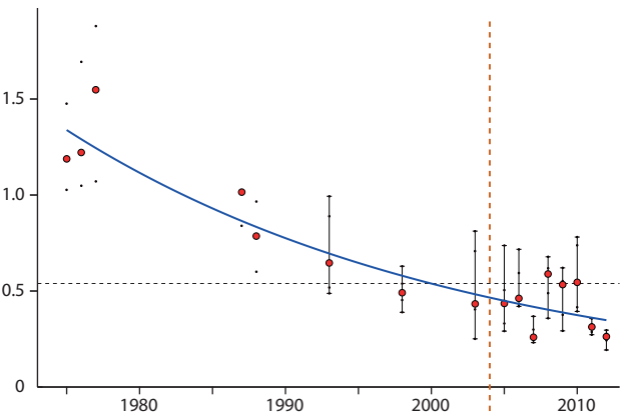
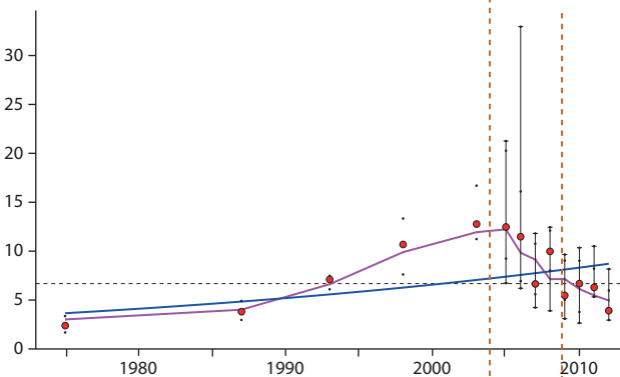


$\Sigma$ PCB<sub>11</sub> in thick-billed murre eggs,  $\mu\text{g/g}$  lw



BDE47 in thick-billed murre eggs,  $\text{ng/g}$  lw



← National regulation (Arctic countries) (PCBs) →

Stockholm Convention entry into force (PCBs) - - - - -

← National regulation (Arctic countries) (BDEs) →

Stockholm Convention amendment (BDEs) - - - - -