

## IRIS-2 report focus

The IRIS-2 report will focus on key priority issues, identified by both scientists and decision-makers, and will analyse how they are being affected by ongoing changes in environment or society, as available knowledge permits. The priority issues will guide the development of report chapters which ultimately will help address the following questions:

- What are the key challenges that climate variability and change poses for Nunavut?
- What information will help Nunavummiut adapt to or cope with these challenges?
- What knowledge is needed to help Nunavummiut better understand and prepare for the impacts of future climate variability and change?

### Progress:

The IRIS-2 team is working in collaboration with a regional steering/consultative committee and ArcticNet researchers to highlight the key scientific questions and priority regional issues faced by the Eastern Arctic region (Topic of Newsletter #3).

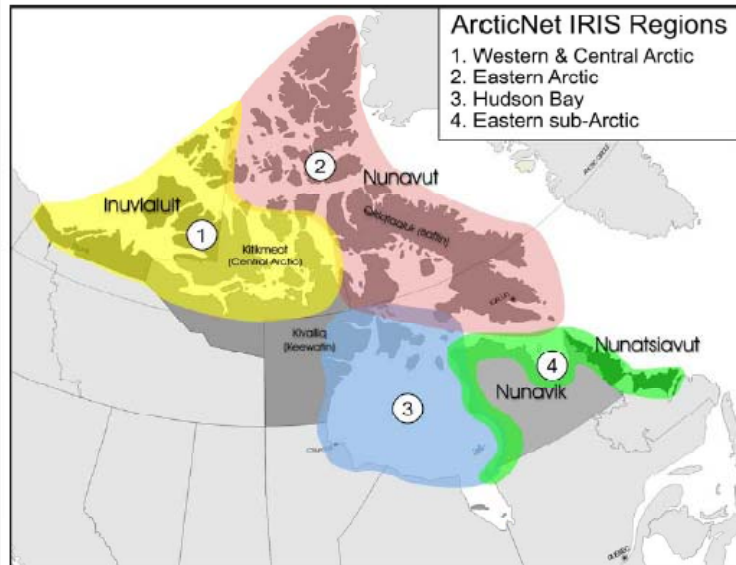
The IRIS-2 team will work in collaboration with ArcticNet researchers and Inuit partners to synthesize the relevant information needed to inform regional issues.

The IRIS-2 Report will identify knowledge gaps and needs that may be addressed by new data gathering initiatives.

**For more information** on the Eastern Arctic IRIS-2 please contact:

**Philippe LeBlanc**  
ArcticNet IRIS Coordinator  
Eastern Arctic Region  
Memorial University of Newfoundland  
[pleblanc@mun.ca](mailto:pleblanc@mun.ca)

## Geographical boundaries of ArcticNet IRIS regions



ArcticNet core research program comprises 36 research projects grouped into four Integrated Regional Impact Studies (IRIS). Although allocated to one IRIS for convenience, most projects operate in several of the regions and contribute to several of the four IRISes.

**IRIS-1** encompasses the western and central Canadian coastal Arctic, including the Inuvialuit Settlement Region (ISR) and the Kitikmeot region of Nunavut.

**IRIS-2** encompasses the eastern Canadian Arctic which covers much of the Nunavut Inuit territory.

**IRIS-3** encompasses Hudson Bay, Foxe basin and Hudson Strait.

**IRIS-4** encompasses the Nunavik and Nunatsiavut Inuit territories.

**For more information on each of the 4 IRIS please visit our website:**

[www.arcticnet.ulaval.ca/research/phase2.php](http://www.arcticnet.ulaval.ca/research/phase2.php)